



2122 W 5th Place  
Tempe, AZ 85281  
Phone 800.922.5252  
480.967.8888  
Fax 480.894.6255  
www.techlite.net



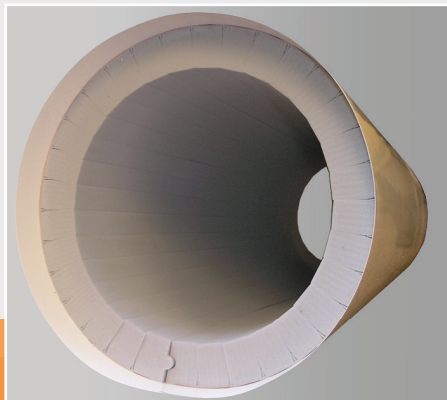
## VX Series

The TechLite® VX Pipe insulation system has been designed and developed to insulate large piping. The VX system profile allows for very easy installation around large pipes, ducts, tanks and vessels. Installation is easily accomplished by a single installer for pipes and tubes.

The VX System starts as flat sheet TechLite® melamine foam which is precision cut to your OD and wall thickness specifications. It will more easily wrap around pipes while providing a significant cost savings to the standard pre-formed pipe insulation sections offered for larger pipes. The ship-lap joint used in our patented TechLite® pre-formed insulation system is still incorporated into this design in order to provide a secure seam.

The VX system is available pre-jacketed in your choice of ASJ, 300-series reinforced flexible PVC or 800-series rigid, glossy, sanitary PVC jackets. VX insulation is available for pipe sizes of 6" diameter and larger for large tanks and vessels.

TechLite® VX System is an excellent, high performance insulation system available for both indoor and outdoor environments.



## Uses and Applications

- Heavy-duty Indoor & Outdoor
- Large Piping and Ducts
- Tanks and Vessels

## Jacket Specifications

- Available in ASJ, 300 and 800 series

## Insulation Specifications

- |                                  |                                     |
|----------------------------------|-------------------------------------|
| • Insulation material            | Open cell Melamine foam             |
| • Service temperature            | -40°F to 350°F (min/max pipe temp.) |
| • Thermal conductivity, k        | 0.25 btu-in/hr-ft²-°F               |
| • Density                        | 0.56 ± 0.06 lb/ft³                  |
| • Flame spread/smoke development | 25/50 per ASTM E84                  |
| • Color                          | Light grey                          |
| • Standard Thickness             | 1½", 2", 2½", 3"                    |