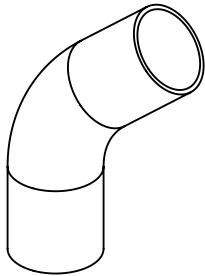


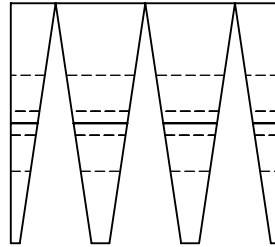
Mitered Bend Insulation Guide

Fitting to be insulated:



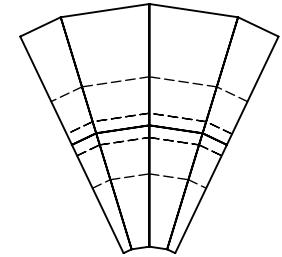
Step 1:

Layout and cut the required cuts on a piece of straight pipe insulation



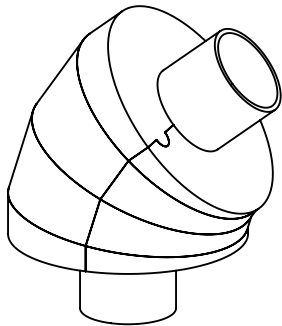
Step 2:

Once cut, the sections should form the appropriate bend radius

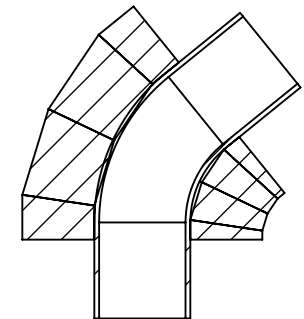
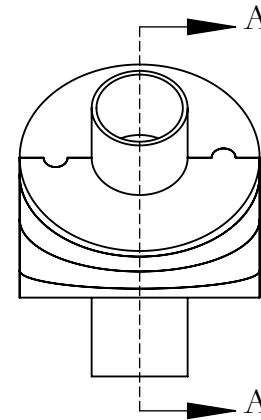
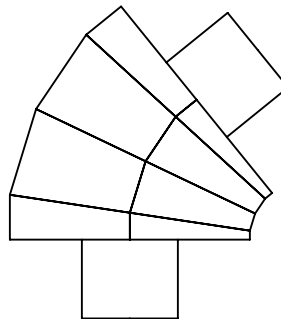


Step 3:

Install the insulation on the fitting and seal the jacket as required



Section View:



SECTION A-A
SCALE 1 : 4