

FIBER FREE
ENERGY EFFICIENT
COST EFFECTIVE





A dynamic,

INNOVATIVE
INSULATION
SYSTEMS

TECHLITE®

Insulation



energy efficient,
improvement in the way to insulate

TechLite® Insulation System

TechLite® has been supplying factory jacketed insulation systems for maintaining critical process temperatures, freeze protection and noise control for over 40 years. Our business is producing and supplying efficient systems for pipe, tank, vessel, and duct insulation for a wide variety of commercial, industrial, military and high-tech applications. We feature TechLite® melamine foam: a high temperature, lightweight, open cell foam which is cost effective to install, user friendly, and environmentally safe. No CFCs are used in manufacturing. You won't find carcinogens, fibers or toxins in TechLite® foam. No special personal safety gear is needed to install and there are no disposal problems either. Whether it's for a routine application or a special project, our products are used in all types of environments. Let us provide you the best insulation system possible in order to solve your specific project needs.

technology



INSULATION SPECIFICATIONS

- Insulation material
 - Service temperature
 - Thermal conductivity, k
 - Density
 - Flame spread/smoke development
 - Color
 - Standard Thickness
- Open Cell Melamine Foam
-40°F* to 350°F (min/max pipe temp.)
0.25 btu-in/hr-ft²·°F
0.56 ± 0.06 lb/ft³
25/50 per ASTM E84
Light Gray
1", 1½", 2", 2½", 3"

**Capable of withstanding -328°F continuously – consult factory with questions regarding extreme temperature applications.*

GENERAL JACKET INFORMATION

379 Series

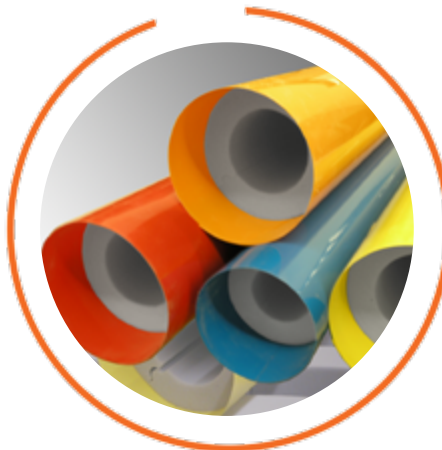
TechLite® 379 Series is a heavy-duty insulation system designed for harsh indoor and outdoor applications. TechLite® 379 Series is available as pipe insulation, flat sheets, and v-grooved sheets to wrap ducts, tanks, and large storage vessels.



- Indoor and Outdoor Use
- Chemical and Industrial Plants
- Tanks and Vessels
- Roof Piping
- Solar Collector Piping

879 Series

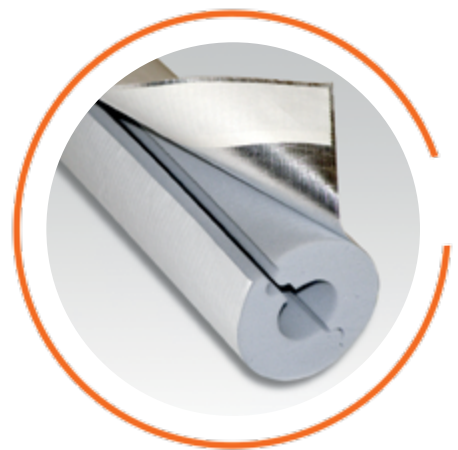
TechLite® 879 Series is a sanitary insulation system developed for clean room and food processing environments. Excellent antibacterial and wash down properties are standard features for the 879 Series.



- Indoor Use
- Clean Room Certified
- Chemical and Industrial Plants
- Sanitary Applications
- Wash Down Environments

ASJ 79 Series

TechLite® ASJ 79 Series is an all service high performance insulation system developed specifically for the insulation contractor. This system provides the contractor a lightweight easy to install, non-fibrous insulation.

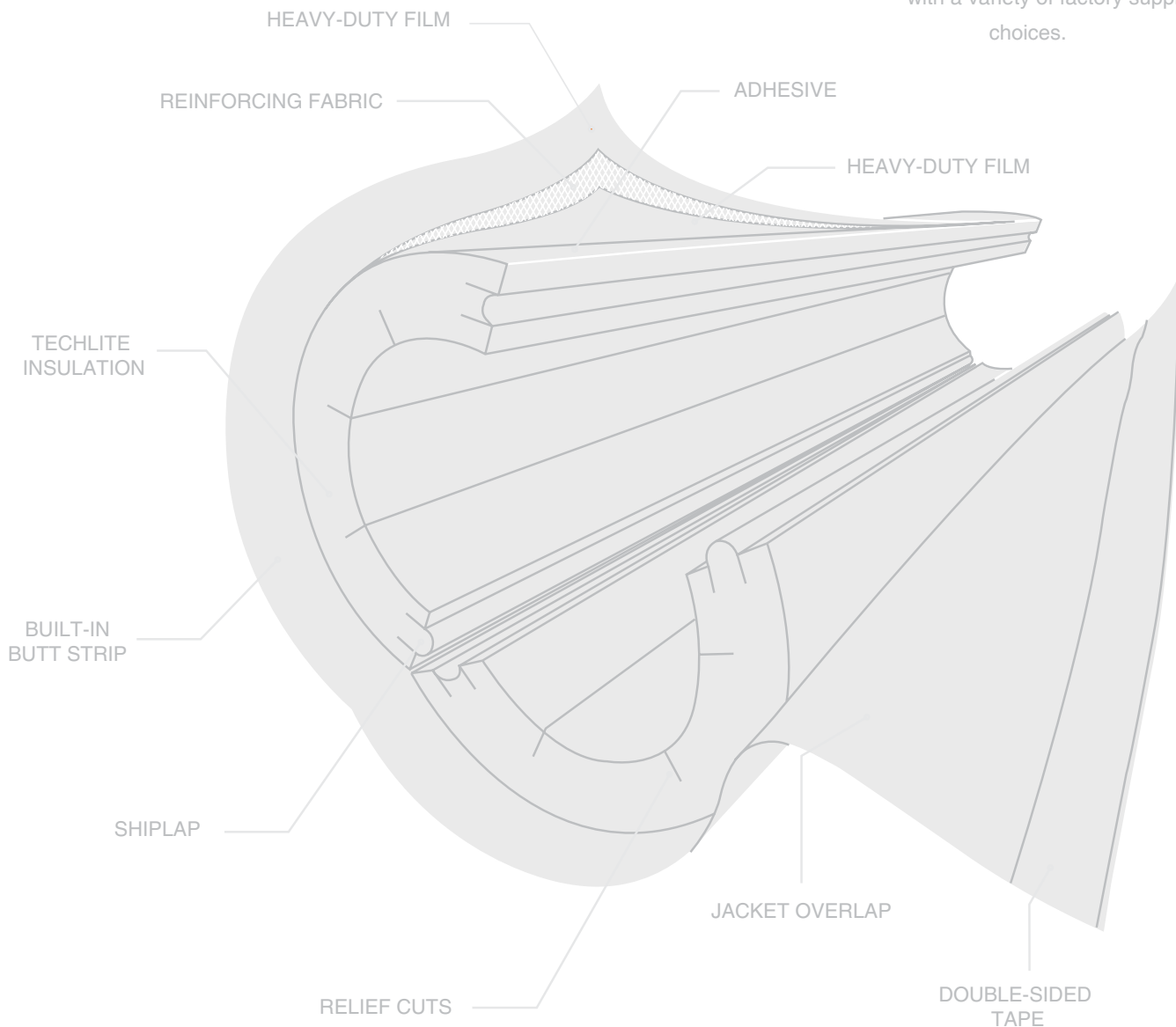


- Indoor Use
- Commercial Facilities
- Institutional Facilities
- Industrial Facilities
- Can be used with Field Applied Jackets

TechLite[®] is a “state of the art” insulation material. It is flexible foam produced from **melamine resin** (a thermoset of the aminoplastics group). The three dimensional structure of the foam is made up of a microscopic, slender skeletal structure that **delivers excellent insulation properties**. No ozone depleting substances are used in the manufacturing of our TechLite[®] foam. As a result of this unique structure and inherent nature of the design, TechLite[®] offers **outstanding properties** such as; classified ASTM C-1410, meets or exceeds ASTM-E84-25/50 (class A) smoke & flame rating, **high temperature resistance**, **low bacterial growth**, and **outstanding fabrication qualities**.

TechLite[®] Piping and Sheet Insulation is a precision machined, mechanical insulation system developed specifically as a **lightweight, non-fibrous alternative** to conventional fibrous and elastomeric products. The insulation system is **safe** and recommended for all sanitary and clean room environments. TechLite[®] insulation systems are **durable** and **efficient** insulation products that will provide years of maintenance-free, **reliable service**.

TechLite[®] Pipe Insulation consists of two half-sections of **precision manufactured** foam insulation with an engineered shiplap design and is **produced in 4-foot lengths**. Precision fabricated TechLite[®] fitting inserts and molded **PVC fitting covers** are designed to complete your pipe insulation jobs the **professional** way. TechLite[®] melamine foam is available with a variety of factory supplied jacket choices.



PLAIN 79 TECHLITE

Insulation Specifications

- **Insulation Material**
Open cell Melamine foam
- **Service Temperature**
-40°F to 350°F (*min/max pipe temp.*)
- **Thermal Conductivity, k**
0.25 btu·in/hr·ft²·°F
- **Density**
0.56 ± 0.06 lb/ft³
- **Flame Spread/Smoke Development**
25/50 per ASTM E84
- **Color**
Light grey
- **Standard Thickness**
1, 1½", 2", 2½", 3"



Uses and Applications

- Complete pipe/tube Insulation Systems
- Tanks and Vessels
- Noise Reduction
- Sanitary and Food Processing
- Clean Rooms



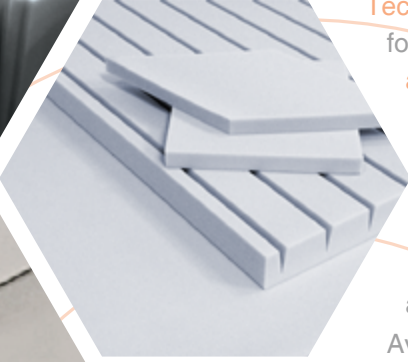
All specifications subject to change without notice. All statements and technical information contained herein are based on tests we believe to be reliable, but the accuracy or completeness is not guaranteed under all circumstances. Before using TechLite® products, the user shall determine suitability for the intended use and user assumes all responsibility for improper selection. U.S. and International patents pending. ©2014 Accessible Products Company, Tempe, Arizona.

Pipe

TechLite® 79 Series is the same outstanding insulation offered with our factory jacketed insulation systems. The insulation is offered **without a jacket** which must be field applied. **All forms** of lagging may be used to protect the insulation from the elements; **aluminum, stainless steel,** and **plastic** are the most common.



Fiber Free
Cost Effective
Energy Efficient



TechLite® **Sheet Stock** is precision-machined for use on **duct work, vessels and custom applications** that require a non-fibrous, lightweight insulation material. Sheet Stock is produced in two forms; Flat and V-grooved sheets. Flat sheets are produced for insulating flat and slightly curved surfaces. V-grooved sheets are produced to accommodate curved and cylindrical surfaces. Available with factory applied jackets and plain for field applied lagging.

Acoustic



TechLite® foam is easily trimmed, cut, and sliced in the field reducing installation time compared to many other insulation materials. In addition to providing **excellent insulation** properties, TechLite® Insulation also provides outstanding **acoustical performance**. 079 plain foam is also available with a variety of factory applied jacketing.

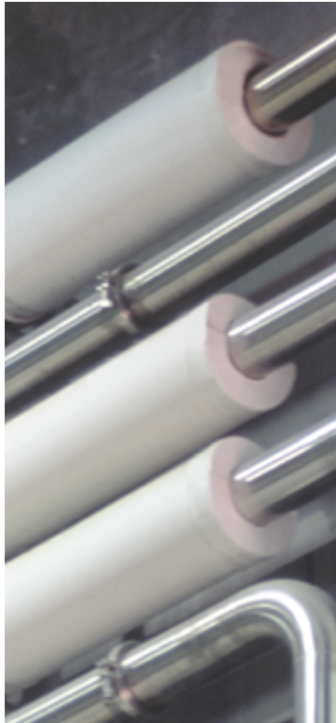
TECHLITE®
Insulation

Sheet

TechLite® ASJ 79 Series is an all service high performance insulation system developed specifically for the insulation contractor. This system provides the contractor with a lightweight, non-fibrous insulation material that is easy to fabricate and can be installed very efficiently.



TECHLITE® I n s u l a t i o n



When properly installed, TechLite® ASJ 79 Series is an economical insulation system that can be used in place of conventional insulation materials. This system is also the best candidate for a secondary metal or plastic lagging, as the ASJ will provide only a simple protection against abuse. The “All Service Jacket” System uses a paper/foil/scrim vapor barrier jacket that is permanently laminated to the TechLite® insulation and should not be exposed to wash downs.





ASJ 79 TECHLITE

Jacket Specifications

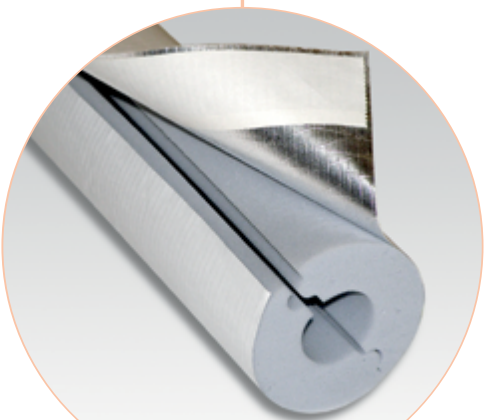
- **Jacket Material**
ASJ paper/foil/scrim
- **Thickness**
0.010"
- **Jacket Color**
White Only
- **Jacket Ambient Service Temperature**
-40°F to 240°F
- **Flame spread/smoke development**
25/50 per ASTM E-84

Uses and Applications

- Indoor Use
- Commercial, Institutional and Industrial Facilities
- Can be used with Field Applied Jackets

Insulation Specifications

- **Insulation Material**
Open cell Melamine foam
- **Service Temperature**
-40°F to 350°F (*min/max pipe temp.*)
- **Thermal Conductivity, k**
0.25 btu·in/hr·ft²·°F
- **Density**
0.56 ± 0.06 lb/ft³
- **Flame Spread/Smoke Development**
25/50 per ASTM E84
- **Insulation Color**
Light grey
- **Standard Thickness**
1, 1½", 2", 2½", 3"





379 TECHLITE

Jacket Specifications

- **Jacket Material**
PVC reinforced with PET fibers
- **Thickness**
0.030"
- **Jacket Color**
Variety available
- **Jacket Ambient Service Temperature**
-40°F to 140°F
- **Flame spread/smoke development**
25/50 per ASTM E-84
- **Weight**
28 oz/yd²

Uses and Applications

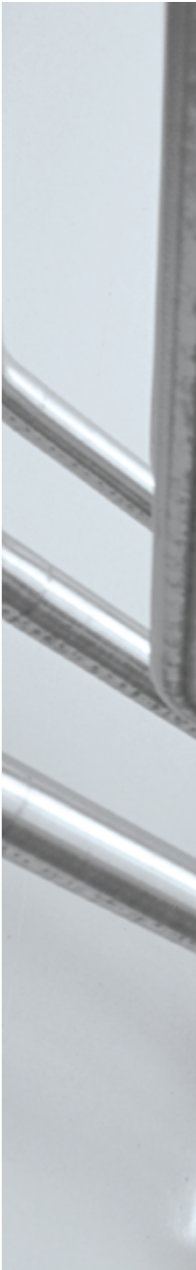
- Indoor and Outdoor
- Chemical and Industrial Plants
- Tanks and Vessels
- Roof Piping
- Solar Collector Piping

Insulation Specifications

- **Insulation Material**
Open cell Melamine foam
- **Service Temperature**
-40°F to 350°F (*min/max pipe temp.*)
- **Thermal Conductivity, k**
0.25 btu·in/hr·ft²·°F
- **Density**
0.56 ± 0.06 lb/ft³
- **Flame Spread/Smoke Development**
25/50 per ASTM E84
- **Insulation Color**
Light grey
- **Standard Thickness**
1, 1½", 2", 2½", 3"



TechLite® 379 Series is a heavy-duty insulation system developed for demanding environments. High abuse and harsh U.V. conditions are no problem for the 379 Series. The 379 Series uses a high strength, flexible PVC/fabric composite exterior jacket that is permanently laminated to the TechLite® insulation. A variety of colored jackets are available to eliminate the need for painting.



TECHLITE® Insulation



Unlike typical metal jackets, the 379 Series actually absorbs impacts and returns to its original shape, therefore maintaining its “vapor barrier” and protecting the insulation even under the most difficult circumstances. TechLite® 379 Series is an excellent, high performance insulation system available for both indoor and outdoor environments.

TechLite® 879 Series is a sanitary insulation system developed for clean room and BioPharma processing environments. Excellent antibacterial and wash down properties are standard features for the 879 Series. This high performance system uses a smooth, semi-rigid PVC exterior jacket that is permanently laminated to our TechLite® foam insulation.



TECHLITE®

I n s u l a t i o n



The mirror smooth finish not only works well, but also looks the part in all BioPharma, clean room, and food processing environments. The TechLite® 879 Series provides years of clean and sanitary service with its hard, glossy surface that never needs painting, and is the best high performance insulation system on the market.





879 TECHLITE

Jacket Specifications

- **Jacket Material**
PVC
- **Thickness**
0.020"
- **Jacket Color**
Standard is White (*color optional*)
- **Jacket Ambient Service Temperature**
-0°F to 140°F
- **Flame spread/smoke development**
25/50 per ASTM E-84

Uses and Applications

- Indoor Use
- Clean Room Certified
- Chemical and Industrial Plants
- Sanitary Applications
- Wash Down Environments

Insulation Specifications

- **Insulation Material**
Open cell Melamine foam
- **Service Temperature**
-40°F to 350°F (*min/max pipe temp.*)
- **Thermal Conductivity, k**
0.25 btu·in/hr·ft²·°F
- **Density**
0.56 ± 0.06 lb/ft³
- **Flame Spread/Smoke Development**
25/50 per ASTM E84
- **Insulation Color**
Light grey
- **Standard Thickness**
1, 1½", 2", 2½", 3"

Standard Colors





679 TECHLITE

679 Series is a custom acoustical insulation composite. It consists of an inner layer of our high performance TechLite® acoustic melamine foam laminated to a thick mass loaded vinyl jacket. As a composite assembly it has exceptional sound attenuation properties. 679 Series is suitable for both indoor and outdoor applications. The jacket is UV stabilized and offers excellent chemical resistance.

Typical applications include: pneumatic conveying systems; tubes, pipes, and ducts used in the movement of plastic pellets or metal parts; deburring and deflashing systems in manufacturing plants; frozen peas or other food products used in food processing plants; high pressure steam or gas piping; to insulate walls or enclosures; to protect personnel from noisy machinery and mining equipment such as axial fans and punch cars.

Uses and Applications

- Heavy-duty Indoor & Outdoor
- Large Piping and Ducts
- Tanks and Vessels

Jacket Specifications

600 Series jacket is composed of a mass loaded PVC compound with ultraviolet and flame retardant additives. This is an excellent sound blocking jacket for low frequency noise. The smooth black PVC exterior also provides good chemical resistance.

Insulation Specifications

- **Insulation Material**
Open cell Melamine foam
- **Service Temperature**
-40°F to 350°F (*min/max pipe temp.*)
- **Thermal Conductivity, k**
0.25 btu·in/hr·ft²·°F
- **Density**
0.56 ± 0.06 lb/ft³
- **Standard Thickness**
1, 1½", 2", 2½", 3"



Acoustic Foam

Uses and Applications

- Manufacturing Facilities
- Sound Studios
- Anechoic Chambers
- Ductwork
- Home Theaters
- Equipment Warehouses
- Meeting Rooms
- Gymnasiums

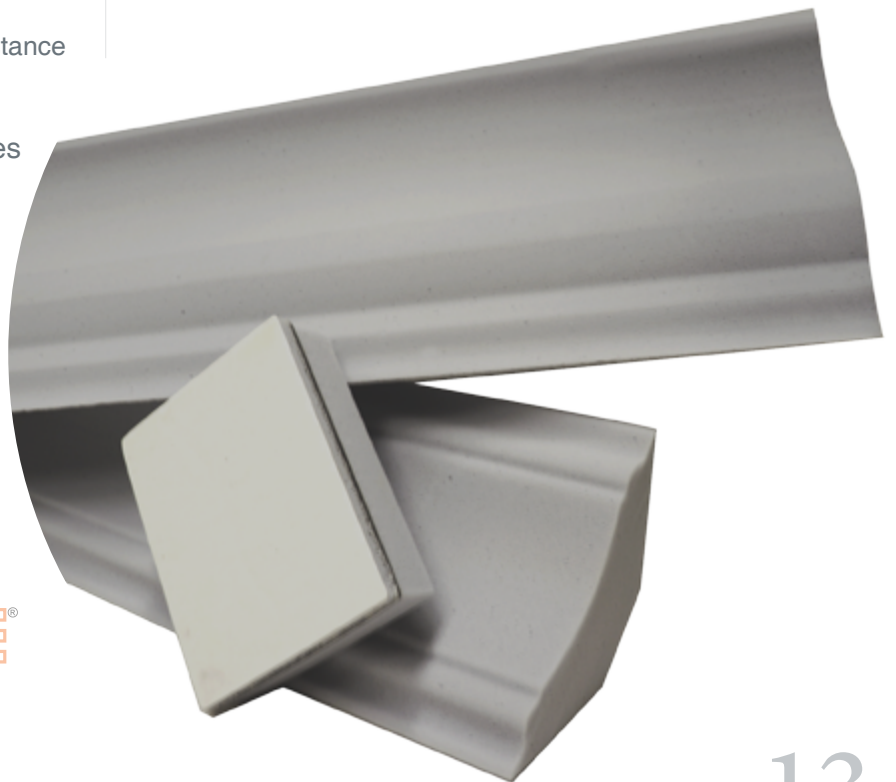
The Benefits

- Echo reduction
- Noise attenuation
- Maximum sound absorption
- Vibration and impact noise reduction
- Improve sound quality
- High heat and temperature resistance
- No additional flame retardants

TechLite® **acoustic foam** reduces overall room reverberation and echo with its wide variety of applications. TechLite® acoustic foam can also be used to isolate rooms and **absorb noise** in large areas, shops or offices. TechLite® offers **many variations of applications** including corner moldings, composites utilizing our 600 Series jacketing, V block, wall paneling and ceiling tiles.

Insulation Specifications

- **Insulation Material**
Open cell Melamine foam
- **Service Temperature**
-40°F to 350°F (*min/max temp.*)
- **Thermal Conductivity, k**
0.25 btu·in/hr·ft²·°F
- **Density**
0.56 ± 0.06 lb/ft³
- **Standard Thickness**
1, 1½", 2", 2½", 3"
- **Standard Color**
Light Grey, White



TECHLITE®
I n s u l a t i o n



Jacket Specifications

- Available in ASJ, 300 and 800 Series

Uses and Applications

- Heavy-duty Indoor & Outdoor
- Large Piping and Ducts
- Tanks and Vessels

Insulation Specifications

- **Insulation Material**
Open cell Melamine foam
- **Service Temperature**
-40°F to 350°F (*min/max pipe temp.*)
- **Thermal Conductivity, k**
0.25 btu·in/hr·ft²·°F
- **Density**
0.56 ± 0.06 lb/ft³
- **Standard Thickness**
1, 1½", 2", 2½", 3"

TechLite® VX System is an excellent, high performance insulation system available for both indoor and outdoor environments.

The TechLite® VX Pipe insulation system has been designed and developed to insulate large piping. The VX system profile allows for very easy installation around large pipes, ducts, tanks and vessels. Installation is easily accomplished by a single installer for pipes and tubes.

The VX System starts as flat sheet TechLite® melamine foam which is precision cut to your OD and wall thickness specifications. It will more easily wrap around pipes while providing a significant cost savings to the standard preformed pipe insulation sections offered for larger pipes. The shiplap joint used in our patented TechLite® preformed insulation system is still incorporated into this design in order to provide a secure seam.

The VX system is available pre-jacketed in your choice of ASJ, 300 Series reinforced flexible PVC or 800 Series rigid, glossy, sanitary PVC jackets. VX insulation is available for pipe sizes of 6" diameter and larger for large tanks and vessels.

VX Series

Accessories

TECHUTE[®]
Insulation


- Fastener Weld (Lap Sealer)
- Applicator Cans
- PVC Tape
- ASJ Tape
- RTV 4500 Sealant
- RTV 6708 Sealant
- Butt Strips
- Mechanical Fasteners
- Tank Straps
- Insulation Hangers

and many **more...**



Custom Applications

TECHLITE®
I n s u l a t i o n



TechLite® Insulation offers engineered solutions for your specific needs and applications. We have experience in CNC foam profiling, machining, die cutting, grinding, assembly and laminations. Our engineers can help you with material choices, drawing specifications, as well as the overall design and implementation of your custom project.

Call Today

(800) 922-5252

conversionchart

Iron Pipe (IPS)	Copper Tubing (CTS)	Stainless Tubing (SST)	Pipe OD	Insulation Thickness					
				1/2	1	1 1/2	2	2 1/2	3
–	1/4	3/8	0.375	# 2	# 5	# 9	# 11	# 13	# 15
1/4	3/8	1/2	0.500	# 2	# 5	# 9	# 11	# 13	# 15
–	1/2	–	0.625	# 2	# 7	# 9	# 11	# 13	# 15
–	–	3/4	0.750	# 3	# 7	# 10	# 12	# 13	# 15
1/2	3/4	–	0.875	# 3	# 7	# 10	# 12	# 15	# 17
3/4	–	1	1.000	# 4	# 7	# 10	# 12	# 14	# 16
–	1	–	1.125	# 4	# 7	# 10	# 12	# 15	# 17
–	–	1 1/4	1.250	# 5	# 8	# 10	# 12	# 14	# 16
1	1 1/4	–	1.375	# 5	# 9	# 11	# 13	# 15	# 17
–	–	1 1/2	1.500	# 6	# 9	# 11	# 13	# 15	# 17
1 1/4	1 1/2	–	1.625	# 6	# 9	# 12	# 13	# 15	# 17
1 1/2	–	–	1.875	# 7	# 10	# 12	# 15	# 17	# 18
–	–	2	2.000	# 8	# 10	# 12	# 14	# 16	# 17
–	2	–	2.125	# 9	# 10	# 12	# 15	# 17	# 18
2	–	–	2.375	# 8	# 11	# 13	# 15	# 17	# 18
–	–	2 1/2	2.500	# 9	# 11	# 13	# 15	# 17	# 18
–	2 1/2	–	2.625	# 9	# 11	# 13	# 15	# 17	# 18
2 1/2	–	–	2.875	# 10	# 12	# 15	# 17	# 18	# 19
–	–	3	3.000	# 10	# 12	# 14	# 16	# 17	# 18
–	3	–	3.125	# 10	# 12	# 15	# 17	# 18	# 19
3	–	3 1/2	3.500	# 11	# 13	# 15	# 17	# 18	# 19
–	3 1/2	–	3.625	# 11	# 13	# 15	# 17	# 18	# 19
3 1/2	–	–	4.000	# 12	# 15	# 17	# 18	# 19	# 20
–	–	4	4.000	# 12	# 14	# 16	# 17	# 18	# 19
–	4	–	4.125	# 12	# 15	# 17	# 18	# 19	# 20
4	–	–	4.500	# 13	# 15	# 17	# 18	# 19	# 20
4 1/2	–	–	5.000	# 14	# 17	# 18	# 19	# 20	# 21
–	–	5	5.000	# 14	# 16	# 17	# 18	# 19	# 20
–	5	–	5.125	# 14	# 17	# 18	# 19	# 20	# 21
5	–	–	5.500	# 15	# 17	# 18	# 19	# 20	# 21
–	–	6	6.000	# 16	# 17	# 18	# 19	# 20	# 21
–	6	–	6.125	# 16	# 18	# 19	# 20	# 21	# 22
6	–	–	6.625	# 17	# 18	# 19	# 20	# 21	# 22
7	–	–	7.625	# 18	# 19	# 20	# 21	# 22	# 23
–	8	–	8.125	# 19	# 20	# 21	# 22	# 22	# 23
–	–	8	8.000	–	# 19	# 20	# 21	# 22	# 23
8	–	–	8.625	# 19	# 20	# 21	# 22	# 23	# 24
9	–	–	9.625	# 20	# 21	# 22	# 23	# 24	# 25
–	–	10	10.000	–	# 21	# 22	# 23	# 24	# 25
–	10	–	10.125	–	# 22	# 22	# 23	# 24	# 25
10	–	–	10.750	# 21	# 22	# 23	# 24	# 25	# 26
11	–	–	11.750	# 22	# 23	# 24	# 25	# 26	# 27
–	–	12	12.000	–	# 23	# 24	# 25	# 26	# 27
–	12	–	12.125	–	# 23	# 24	# 25	# 26	# 27
12	–	–	12.750	# 23	# 24	# 25	# 26	# 27	# 28
14	–	–	14.000	–	# 25	# 26	# 27	# 28	# 29
16	–	–	16.000	–	# 27	# 28	# 29	# 30	# 31
18	–	–	18.000	–	# 29	# 30	# 31	# 32	# 33
20	–	–	20.000	–	# 31	# 32	# 33	# 34	# 35

RECOMMENDED INSULATION THICKNESS GUIDE / °F / INCHES

Pipe Size	-150° F to -64° F	-65° F to 0° F	1° F to 34° F	35° F to 60° F	61° F to 95° F	96° F to 120° F	121° F to 150° F	151° F to 220° F	221° F to 250° F	251° F to 300° F	301° F to 350° F	351° F to 400° F
1/2	2	2	1 1/2	1	1	1	1	1 1/2	1 1/2	2	2	2
3/4	2	2	1 1/2	1	1	1	1	1 1/2	1 1/2	2	2	2
1	2	2	1 1/2	1	1	1	1	1 1/2	1 1/2	2	2	2
1 1/4	2	2	1 1/2	1	1	1	1	1 1/2	1 1/2	2	2	2
1 1/2	2	2	1 1/2	1	1	1	1	1 1/2	1 1/2	2	2	2
2	2 1/2	2	2	1 1/2	1	1	1 1/2	1 1/2	2	2	2	2
2 1/2	2 1/2	2 1/2	2	1 1/2	1	1	1 1/2	1 1/2	2	2	2	2
3	2 1/2	2 1/2	2	1 1/2	1	1	1 1/2	1 1/2	2	2	2	2
3 1/2	2 1/2	2 1/2	2	1 1/2	1	1	1 1/2	1 1/2	2	2	2	2
4	3	2 1/2	2	1 1/2	1	1	1 1/2	1 1/2	2	2	2 1/2	2 1/2
6	3	2 1/2	2 1/2	2	1 1/2	1 1/2	2	2	2	2	2 1/2	2 1/2
8	3	3	2 1/2	2	1 1/2	1 1/2	2	2	2	2 1/2	2 1/2	2 1/2
10	3	3	2 1/2	2	1 1/2	1 1/2	2	2	2	2 1/2	2 1/2	3
12	3	3	2 1/2	2	1 1/2	1 1/2	2	2	2	2 1/2	3	3

The Zippertubing Family of Companies

ZIPPERTUBING

Corporate Headquarters

7150 W. Erie St.
Chandler, AZ 85226
Phone 480-285-3900
Fax 480-285-3997
www.zippertubing.com

ZIPPERTUBING (Japan) Ltd.

3-2-56 Takatsukadai
Nishiku, Kobe
651-2271 Japan
Phone 81-78-991-4171
Fax 81-78-991-4174

ZIPPER-TECHNIK, GmbH

Werner-v.-Braun-Straße 3
D-63263 Neu-Isenberg, Germany
Phone 49-6102-73870
Fax 49-6102-34034
www.zipper-technik.de

ACCESSIBLE PRODUCTS COMPANY

2122 West 5th Place
Tempe, AZ 85281
Phone 480-967-8888
Fax 480-894-6255
www.techlite.net

ZIPTAPE LABEL I.D. SYSTEMS

2122 West 5th Place
Tempe, AZ 85281
Phone 480-966-2999
Fax 480-894-6255

TICON AG

Engelgasse 7
9630 Wattwil, Switzerland
Phone 41-71-985-0036
Fax 41-71-985-0037

TECHLITE[®]
insulation